

# PowerMATE<sup>®</sup>-CM

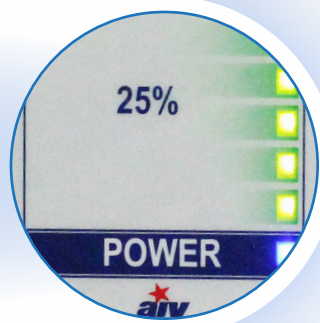
## DURABLE HUBBELL OUTLETS

Maximize Power Access with (4) Hospital Grade Outlets Installed Ground Pin Up



## REAL-TIME CURRENT MONITORING LED DISPLAY

View Current Draw From Plugged-In Equipment



## DUAL CIRCUIT BREAKERS

Increase Patient Safety with Added Layer of Shock Protection



## TEST WITH CURRENT BAR

Use a Clamp Meter To Verify Current Draw

*\*clamp meter not included*



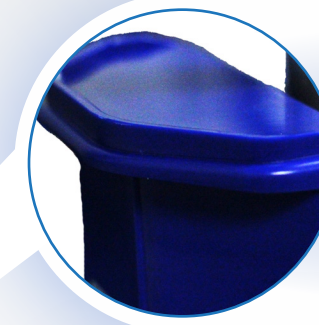
## Dual Rated Special Purpose Relocatable Power Tap

Recognized Component to **UL1363A & UL 60601-1** Recognized Approved for Use In Patient Care Areas



## RELIABLE DRIP GUARD

Prevent Fluid Intrusion and Drop Damage



## UPGRADED POWER CORD

Enhance Equipment Mobility with 15ft Single Over-Molded, Hospital Grade Power Cord



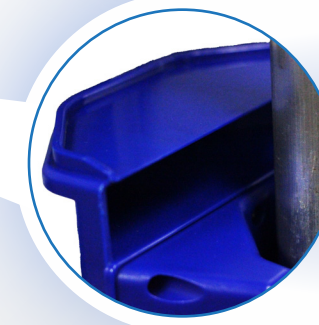
## MOUNTING CAPABILITIES

Permanently Mount with the Included Locking Bolt with Nut



## EASY HANDLING

Carry & Mount with Ease by Utilizing Handle at the Top



AVAILABLE IN 15 AMP & 20 AMP  
INCLUDES 1-YEAR WARRANTY

visit: [aiv-inc.com](http://aiv-inc.com)



call: 888.509.8760

