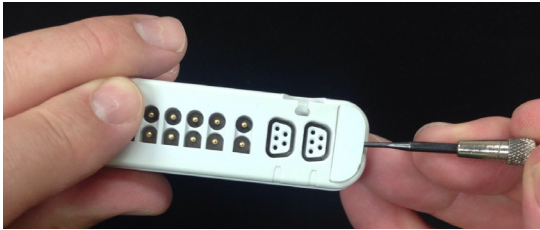


PRO/CH/T14 Case Kit Upgrade Instructions

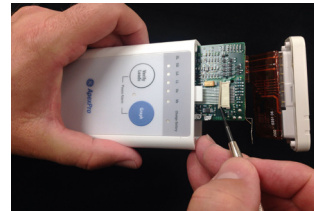
- Kit Contents**
1. PRO/PRO CH / T14 case w/ membranes installed
 2. Rear Label (loose in bag)
 3. Header Screw Covers (2 - loose in bag)

Installation Instructions

1. Remove screw covers from header. Remove screws that are located underneath the screw covers. **NOTE: PRO CH units require a Torx® T6 driver to remove screws**



2. Dislodge header clips located on each side of the old case. Remove set screw holding internals to old case. Unhook ribbon cable from internals and slide internals & header out of old case



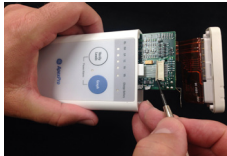
(Continued on Reverse)

PRO/CH/T14 Case Kit Upgrade Instructions

3. Remove TTX number and bar code from the old case and affix it to the new case. Cover bar code label with provided new Rear Label.



4. Take Header and internals assembly and slide them into the new case. Connect the ribbon cable and reinstall the set screw. Use original screws and new screw covers to reattach header to unit



800.990.2911 • aivsales@aiv-inc.com